

THE MULTIDIMENSIONAL HUMAN BODY

Freedom Teachings® – From Biofield to Biology

The human body is a **scalar-wave, multidimensional system** where consciousness, energy, and matter interact.

It is organized through the **Kathara Grid (12-sphere Tree of Life)** and sustained by the **Crystala Spiral**, expressing itself through the physical body.

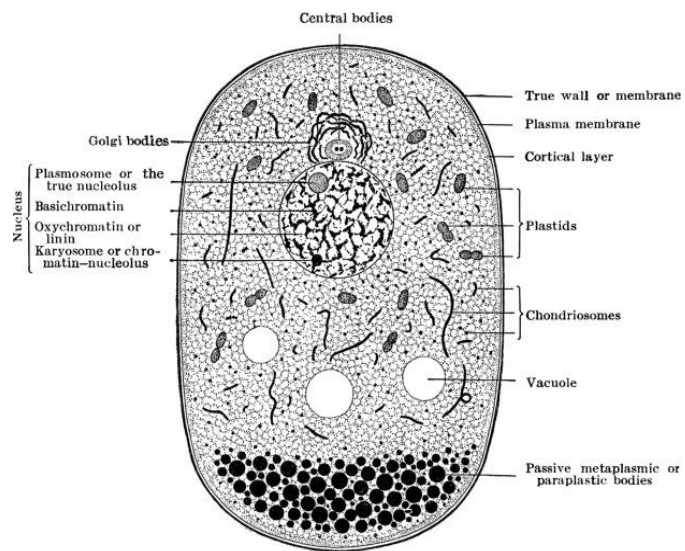
By Danuta Domurad, DNM

PART 1 — THE PHYSICAL BODY

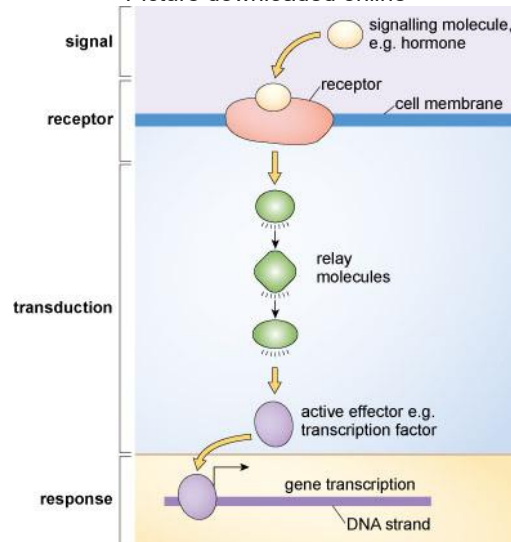
Cellular Intelligence, Microbiome & Biofield Orchestration

CELLULAR SYSTEM

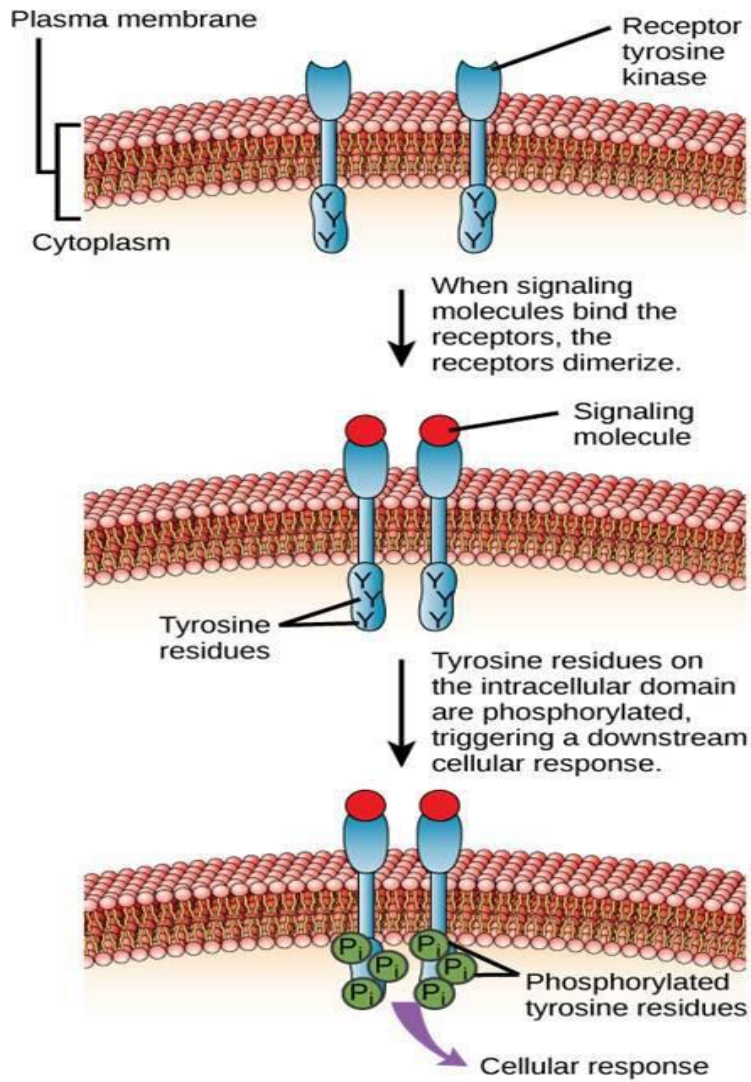
50+ Trillion Living Units



Picture downloaded online



Picture downloaded online



Function:

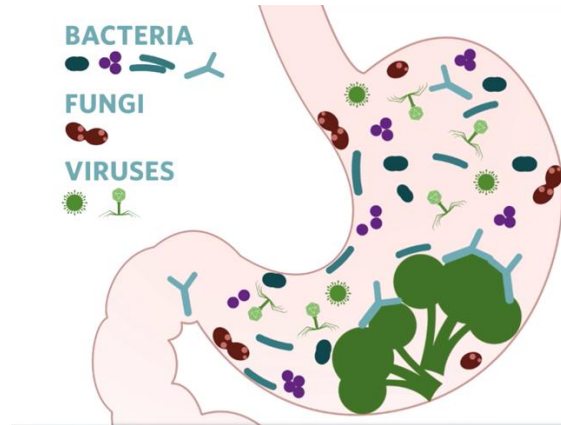
- Produce energy (ATP)
- Repair and regenerate tissues
- Communicate via chemical and electrical signals

Innerstanding:

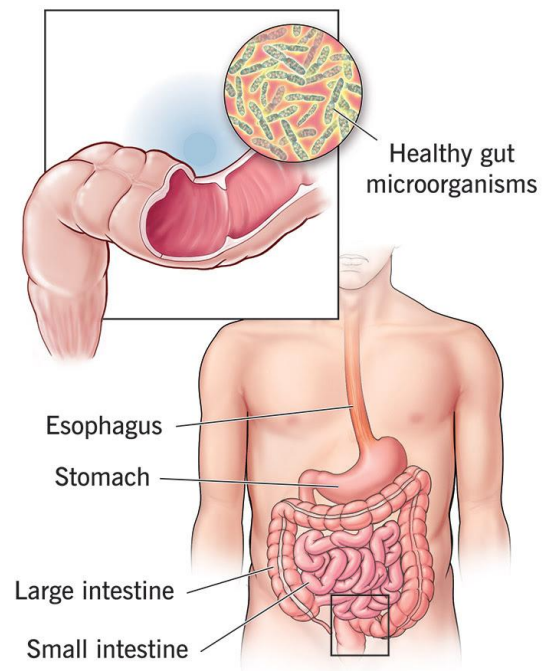
Cells respond to **signals from the biofield and environment** — not randomness.

MICROBIOME

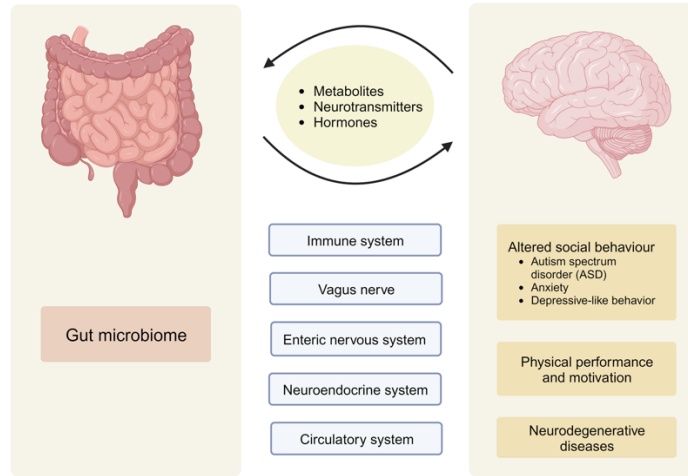
The Internal Ecosystem



Gut microbiome



Microbiota gut-brain axis



Function:

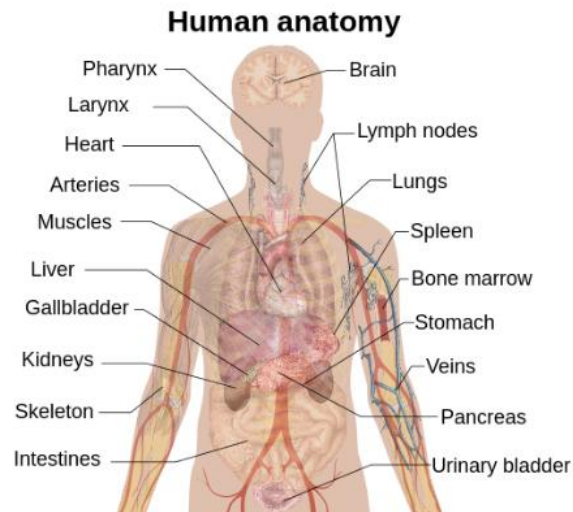
- Digestion and nutrient processing
- Neurotransmitter production
- Immune regulation

Innerstanding:

You are a **multi-species intelligence system**, not just a body.

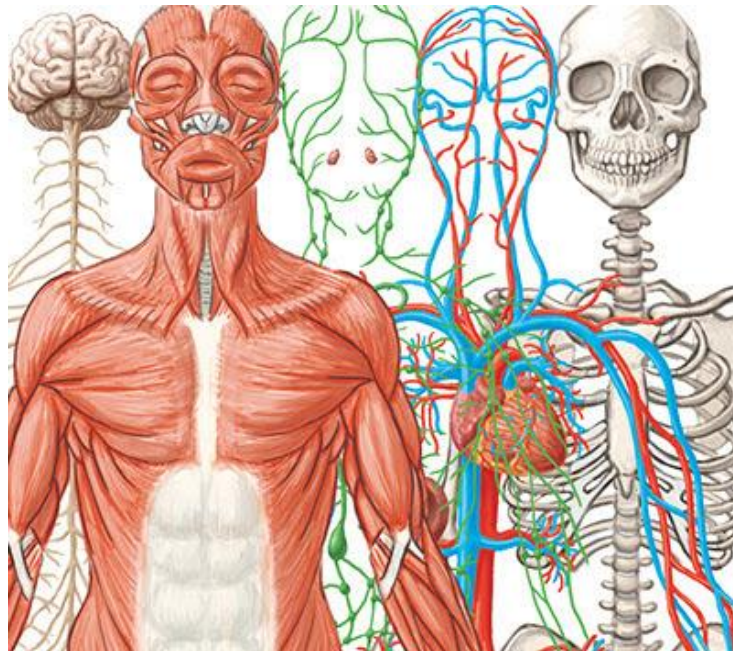
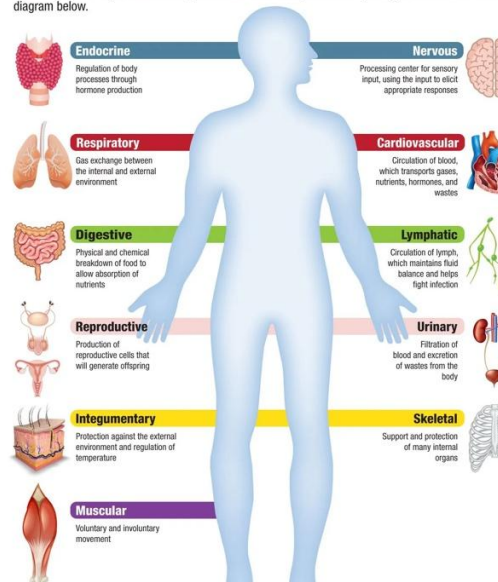
ORGAN SYSTEM NETWORK

Integrated Intelligence



Human Body Systems

There are 11 main systems that keep our bodies functioning. Learn the primary roles of each in the diagram below.



Function:

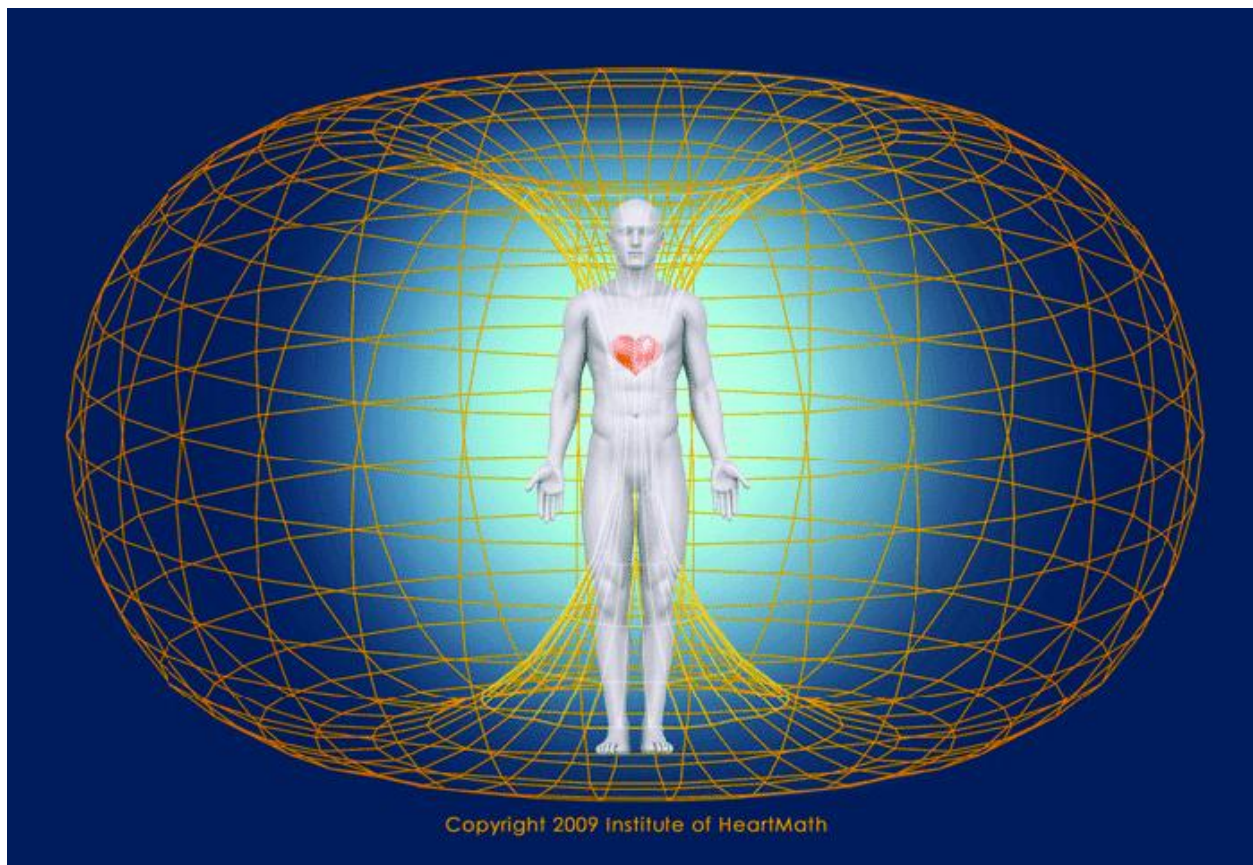
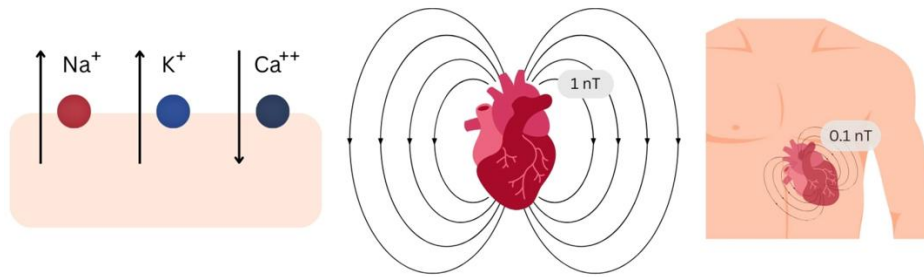
- Maintain homeostasis
- Coordinate internal processes
- Adapt to stress

Innerstanding:

Organ's function as a **synchronized network**, not isolated parts.

BIOFIELD

The Electromagnetic Field & Inner Intelligence



@Institute of HeartMath, 2009

WHAT THE BIOFIELD IS

The biofield is the **electromagnetic and scalar field** that surrounds and penetrates the human body.

It is not separate from you — it is the **organizing intelligence that runs the body**

INNER INTELLIGENCE

The biofield functions as an **inner intelligence system** that:

- Knows how to build the body from a single cell
 - Maintains balance (homeostasis)
 - Coordinates healing and repair
 - Regulates communication between all systems
-

ELECTROMAGNETIC NATURE

- Heart field → strongest electromagnetic signal
- Brain → electrical signaling
- Cells → voltage-based communication

These fields carry **information that organizes the body**

HOW IT ORCHESTRATES THE BODY

Biofield

- Electrical signals
 - Chemical reactions
 - Cellular behavior
 - Organ function
-

EFFECT ON CELLS

- Directs DNA expression
- Regulates regeneration
- Coordinates timing and repair

EFFECT ON MICROBIOME

- Influences gut balance
- Regulates immune responses
- Affects gut-brain communication

EFFECT ON ORGAN SYSTEMS

- Synchronizes heart and brain
- Regulates hormones
- Balances nervous system

STATE OF THE FIELD

Coherent:

- Clarity
- Energy
- Strong immunity

Disrupted:

- Fatigue
- Stress patterns
- Inflammation

CORE INNERSTANDING

The biofield is the **command system**

The body is the **execution system**

PHYSICAL BODY FLOW

Biofield

- Cellular communication
- Organ coordination
- Microbiome interaction
- Physical expression

PART 2 — MULTIDIMENSIONAL BODY

ETHERIC BODY

Energy blueprint distributing life-force into the physical body.

ASTRAL BODY (EMOTIONAL)

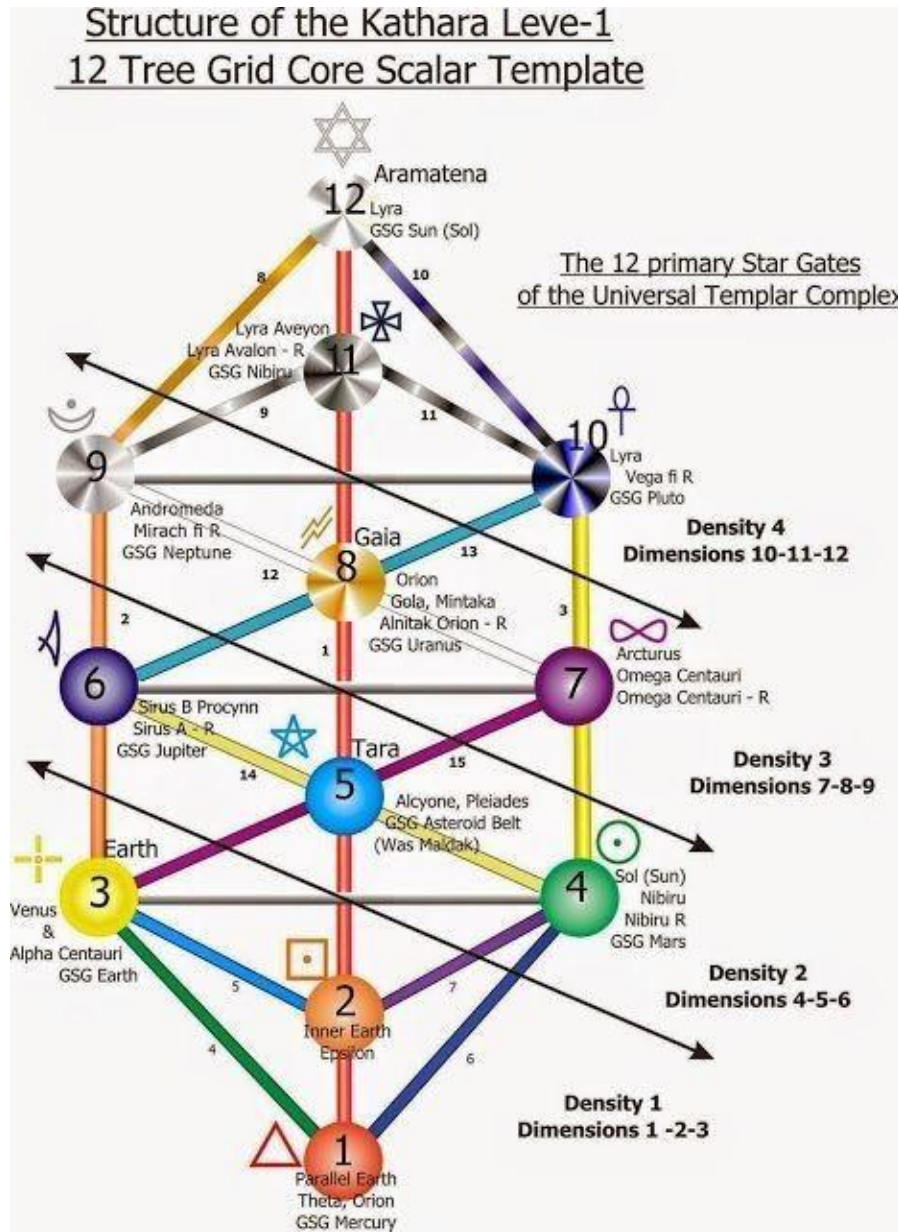
Stores emotional memory and governs feeling responses.

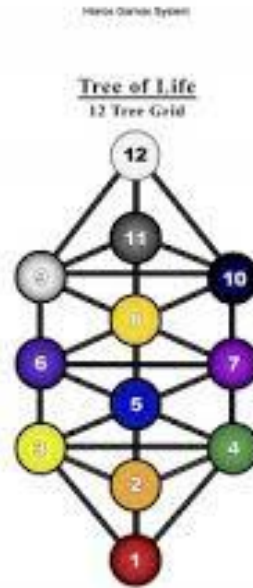
MENTAL BODY

Creates beliefs, perception, and thought patterns.

CAUSAL BODY

Kathara Grid Blueprint





Function:

- Core morphogenetic template
- Stores miasmatic imprints
- Organizes manifestation patterns

MIASMIC IMPRINTS

Karmic Loops in the Morphogenetic Field

WHAT ARE MIASMIC IMPRINTS

Miasmatic imprints are **distortions recorded within the morphogenetic field**, primarily within the **Kathara Grid (Causal Body template)**.

They are not random problems —they are **stored energetic patterns** that influence how reality unfolds.

WHAT IS A KARMIC LOOP

A karmic loop is a **repeating cycle of experience** created by an unresolved miasmatic imprint.

It is the mechanism through which the system attempts to:

- Restore balance
 - Resolve distortion
 - Return to **Divine Right Order**
-

HOW MIASMA FORMS

Miasmatic imprints are created when there is:

- Emotional trauma not processed
- Repetitive negative thought patterns
- Actions misaligned with inner truth
- Shock, stress, or energetic overwhelm

These experiences create **distortions in the Kathara Grid**

WHERE IT IS STORED

- Causal Body (Kathara Grid)
 - DNA template
 - Biofield and chakra system
-

HOW THE LOOP WORKS

Miasmatic imprint

- Distorted energy flow
 - Thought/emotional patterns
 - Behavior and choices
 - Repeated experiences
 - Reinforcement of the imprint
-

HOW IT SHOWS UP

- Repeating relationships
 - Emotional triggers
 - Chronic health patterns
 - Life stagnation
 - Same story, different faces
-

WHY IT FEELS INVISIBLE

Because it operates through:

- Mental Body (subconscious)
 - Astral Body (emotions)
 - Causal Body (field distortion)
-

ROLE OF THE BODY

The physical body expresses miasma as:

- Symptoms
- Tension
- Illness patterns

The body is **revealing the distortion — not creating it**

RESOLUTION

Karmic loops dissolve when:

- Awareness is brought to the pattern
- Emotional charge is released
- Thought patterns are restructured
- The Kathara Grid returns to alignment

Healing = restoring **energy flow + Divine Right Order**

Core Classical Miasms

- Psora (Psoric Miasm)

Theme: Deficiency / survival / struggle
Physical: Skin issues, allergies, inflammation
Emotional: Fear, insecurity, lack
Terrain: Poor absorption, weakened vitality

- Sycosis (Sycotic Miasm)

Theme: Accumulation / excess / suppression
Physical: Warts, cysts, tumors, water retention
Emotional: Shame, secrecy
Terrain: Toxic buildup, sluggish detox

- Syphilitic Miasm

Theme: Destruction / degeneration
Physical: Tissue breakdown, ulcers, deformities
Emotional: Hopelessness, self-destructive patterns
Terrain: Deep cellular toxicity

- Tubercular Miasm

Theme: Instability / restlessness
Physical: Respiratory weakness, fatigue
Emotional: Dissatisfaction, desire for change
Terrain: Poor oxygenation

- Cancer Miasm

Theme: Over-control / suppression
Physical: Tumor formation, immune dysregulation
Emotional: Perfectionism, over-responsibility
Terrain: Cellular miscommunication

Expanded Biological / Terrain Miasms

- Fungal / Mycotic Miasm

Associated with: Candida, mold
Physical: Brain fog, fatigue, sugar cravings
Theme: Infiltration

- Parasitic Miasm

Physical: Digestive issues, nutrient depletion
Theme: Energy drain

- Viral Miasm

Physical: Latent infections, flare-ups
Theme: Dormancy and reactivation

- Bacterial Miasm

Physical: Chronic infections, inflammation
Theme: Irritation / immune response

Toxic / Environmental Miasms

- Heavy Metal Miasm

Sources: Mercury, lead, aluminum

Effects: Neurological and hormonal disruption

- Chemical Miasm

Sources: Pesticides, plastics, medications

Effects: Liver burden, endocrine disruption

- Radiation / Electromagnetic Miasm

Sources: Radiation, EMFs

Effects: Nervous system imbalance, sleep disturbance

Mental & Emotional Miasms

- Mental Miasm

Theme: Distorted thought patterns

Manifestation: Anxiety, repetitive thinking

- Emotional Miasm

Theme: Unprocessed emotional residue

Manifestation: Psychosomatic symptoms

Degenerative & Immune Miasms

- Autoimmune Miasm

Theme: Self-attack

Physical: Immune system targeting own tissues

- Degenerative Miasm

Physical: Progressive tissue breakdown

- Allergic Miasm

Theme: Hypersensitivity

Physical: Immune overreaction

Energetic / Informational Miasms

- Karmic Miasm

Pattern repetition across experiences

- Ancestral Miasm

Inherited patterns across lineage

- Trauma / Shock Miasm

Stored nervous system imprint

- Imprint / Interference Miasm

Persistent disruption patterns

Master List

Psora
Sycosis
Syphilitic
Tubercular
Cancer
Fungal
Parasitic
Viral
Bacterial
Heavy Metal
Chemical
Radiation
Mental
Emotional
Autoimmune
Degenerative
Allergic
Karmic
Ancestral
Trauma
Imprint / Interference

CRYSTALA SPIRAL

The eternal life-force current circulating through the system.

SOUL MATRIX (D4–D9)

Identity field integrating emotional, mental, and spiritual awareness.

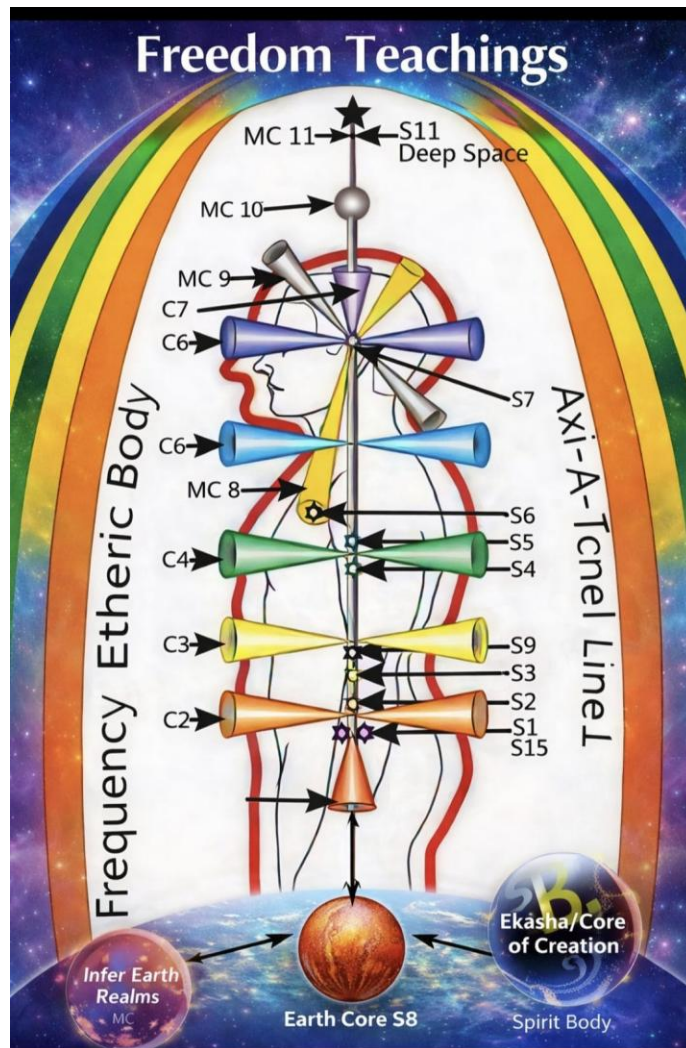
AVATAR MATRIX (D10–D12)

Higher identity (Christos blueprint).

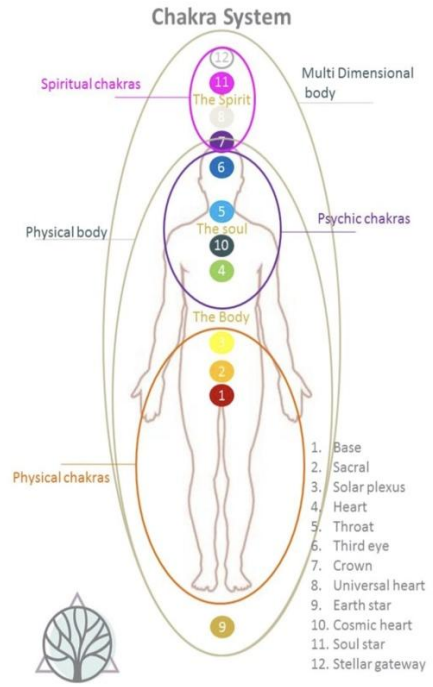
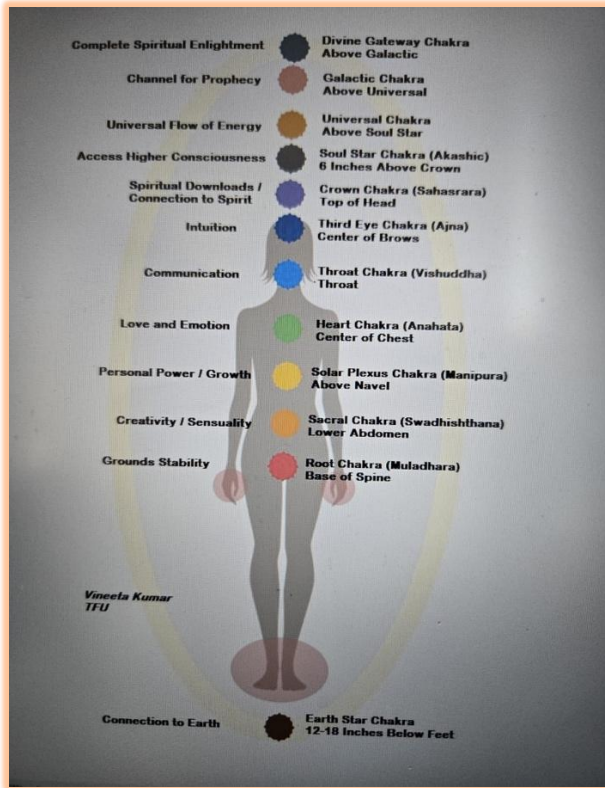
RISHI MATRIX (D13–D15)

Source-level identity and pure consciousness.

PART 3 — THE 15 CHAKRA SYSTEM (SHA-KA-RA)



@Infer Earth Realms MC



LOCATIONS

BELOW BODY

Chakra 12 — ~6 inches below feet (Earth anchor)

BODY (D1–D3)

- 1 Root
- 2 Sacral
- 3 Solar Plexus

SOUL BRIDGE (D4–D6)

4 Heart

5 **Azurite Point (Thymus)**

6 Throat

SOUL MATRIX (D7–D9)

7 Third Eye

8 Crown

9 Higher Crown

AVATAR (D10–D12)

10–11–13

SOURCE (D13–D15)

14–15–16

Extended Chakra System (8th → 15th)

8th Chakra — Soul Star Chakra

Location: ~15–30 cm (6–12 inches) above your head

Function: Soul memory, higher self-connection

Theme: “Who I am beyond this lifetime”

This is like your soul blueprint access point

9th Chakra — Spirit Chakra

Location: ~30–60 cm above head

Function: Connection to soul family / oversoul

Theme: “My soul lineage and guidance”

Often experienced as expanded awareness and guidance downloads

10th Chakra — Universal Chakra

Location: ~60–90 cm above head

Function: Universal intelligence / divine order

Theme: “I am part of the whole”

This is where individual identity begins dissolving into unity

11th Chakra — Galactic Chakra

Location: ~1–2 meters above head

Function: Galactic consciousness / star connection

Theme: “Beyond Earth-based identity”

Associated with star seed awareness / multidimensional perception

15th Chakra — Cosmic Chakra (Very High Frequency Field)

Location: Not fixed — expands far beyond the body

Function: Pure source connection / infinite field

Theme: “I am one with Source / All That Is”

This is not a “point” — it’s an infinite field of consciousness

AZURITE POINT (KEY GATEWAY)

- Between Heart and Throat
- Integrates higher frequency into the body

FULL SYSTEM FLOW

Source

→ Rishi

→ Avatar

→ Soul

→ Azurite Point

→ Kathara Grid

→ Etheric Body

→ Physical Body

CORE PRINCIPLES

- The body is a **morphogenetic field expression**
 - The **Kathara Grid** is the template of form
 - The **Crystala Spiral** sustains life-force
 - The **Biofield orchestrates biology**
 - The **15 Chakras connect dimensional frequencies**
 - Healing restores **Divine Right Order**
-

COMPLETE INNERSTANDING

You are:

- A **biofield organizing intelligence**
- Expressing through **cells and microbiome**
- Structured by the **Kathara Grid**
- Energized by the **Crystala Spiral**
- Connected through the **15 Chakra System**

© Danuta Domurad, DNM,
Introspective Hypnosis Facilitator,
Founder of Quantum & Holistic Wellness Clinic | Reverse Aging Wellness Clinic
Mississauga, Ontario, Canada